



GMT MONTHLY MEMBERSHIP PROGRESS REPORT

Results as of: 2/28/2019

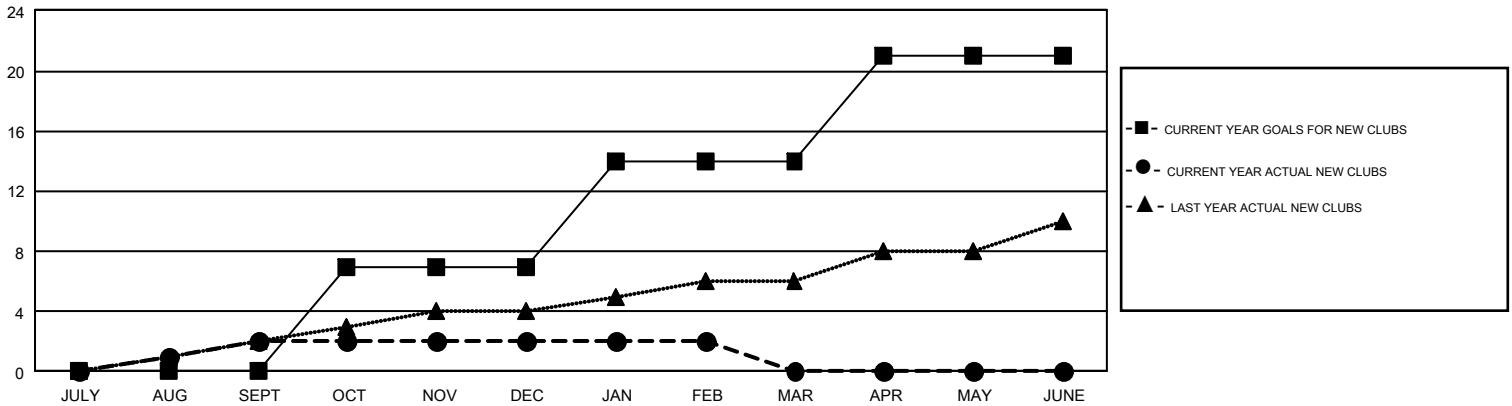
GMT Constitutional Area 7, Group A

GMT: ANN ELDRIDGE

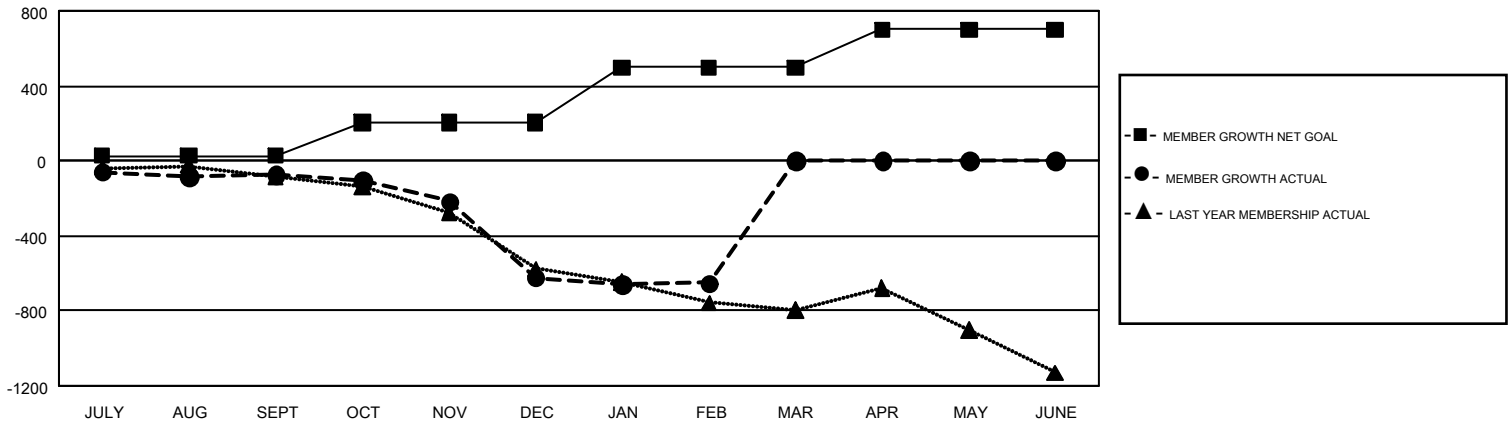
REPORT DOES NOT INCLUDE CLUBS IN UNDISTRICTED AREAS.

Clubs				Members			
RESULTS FOR 2018-2019				RESULTS FOR 2018-2019			
QUARTER	NEW CLUB GOAL	NEW CLUBS	DROPPED CLUBS	QUARTER	MEMBER GROWTH NET GOAL	MEMBER GROWTH ACTUAL	DROPPED MEMBERS ACTUAL (including transfers)
JULY/AUG/SEPT	0	2	7	JULY/AUG/SEPT	26	780	731
OCT/NOV/DEC	7	0	0	OCT/NOV/DEC	179	612	1,079
JAN/FEB/MAR	7	0	8	JAN/FEB/MAR	293	411	375
APR/MAY/JUNE	7	0	0	APR/MAY/JUNE	203	0	0

GOALS AND ACTUAL NEW CLUBS CUMULATIVE



GOALS AND ACTUAL MEMBERS CUMULATIVE



DROPPED CLUBS: 15	636 CLUBS OF 1,207 ADDED 1 OR MORE NEW MEMBERS	<u>GENDER DISTRIBUTION</u>
<u>DROPPED MEMBERS</u>	CLICK HERE FOR CUMULATIVE MEMBERSHIP DATA	MALE 16,414 (65.97%)
DECEASED 186		FEMALE 8,467 (34.03%)
CLUB CANCELLED 11		TOTAL FAMILY UNIT MEMBERS 4,226
OTHER 1,984		FAMILY MEMBERS PAYING HALF DUES 2,139
TOTAL 2,181		